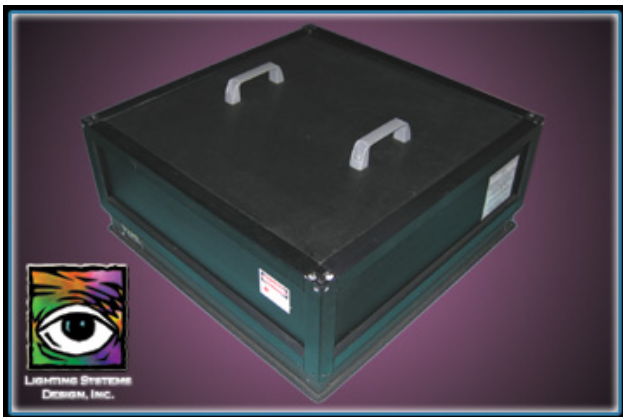
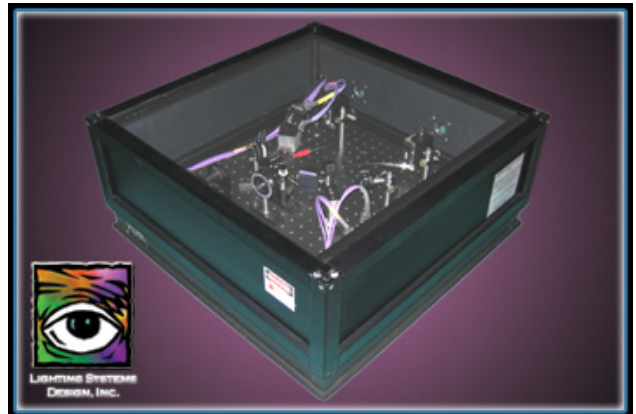




SCIMITAR

The Scimitar Laser Projector is a small format laser projector intended to be used with tandem Argon/Krypton mixed gas lasers, combining the outputs for high power applications. It can be used with either small frame (<5W) or large frame (>10W) lasers, providing both redundancy and extended power.

The projector utilizes dual PCAOM systems, modulating each beam independently, with efficiencies of 75% or better. After modulation, the first order beams are combined with an optical bridge. The resulting beam is directed to an XY scanhead, for final output.



A secondary optical path intercepts both beams prior to the PCAOM, combining them in a second optical bridge, for a full power output such as a diffraction grating or beam position. This alternate path does not provide color control.

The Scimitar projector is based on a 24 x 24 inch, 2.3-inch thick optical table, with the standard 1-inch grid of 1/4-20 mounting holes. The table has a black surface finish, reducing diffuse reflections. The table is surrounded by a protective housing of black anodized aluminum, with primary access through the top, via a

defeatably interlocked removable lid. The housing is 8 inches high, and has removable front and rear panels.

- Size: 24 "x 24" x 8"
- Weight: 80 lbs.
- Power Input: 110/220 VAC 6 – 10 Amps
- Scanners: CTI 6800 HP or 6215
- Lasers: 500mW to 30W
- Class: IV
- Delivery Time: 4-6 weeks
- ILDA ISP Compliant